



# The Tie Dye Lab Custom Order Form

Date: \_\_\_\_\_ Name: \_\_\_\_\_ Phone #: \_\_\_\_\_

Item/Size: \_\_\_\_\_ [TDL ITEMS & PRICE LIST](#) (If ordering multiple items with same colors/design, use one form and submit items/sizes needed. If ordering multiple items with different colors/designs, fill out multiple order forms.)

Colors: (Up to 3 colors included, \$1/extra color) \_\_\_\_\_ [TDL COLOR CHART](#)

Add a Graphic?  Yes  No If Yes [TDL STOCK GRAPHIC](#) (list here): \_\_\_\_\_ OR [CUSTOM GRAPHIC](#)

I acknowledge that all custom order sales are final: \_\_\_\_\_

Customer Signature

**Please mark your design choice** (click here for design images: [TIE DYE DESIGNS](#))

## SPIRAL

- Classic Spiral
- Two Toned Spiral
- Alternating Spiral
- Striped Spiral Circle: **Two-Toned or Classic**

What color do you want your stripe:

\_\_\_\_\_

## STRIPE

- Vertical
- Horizontal
- Diagonal
- S-Stripe
- Rainbow

## BULLSEYE

- Centered
- Off Centered

## CRUMPLE

- Full Color
- Some White

**OTHER** - If you'd like something other than listed, we will contact you!

## LABEL IT

**Spiral:** Label starting point how you'd like your color pattern

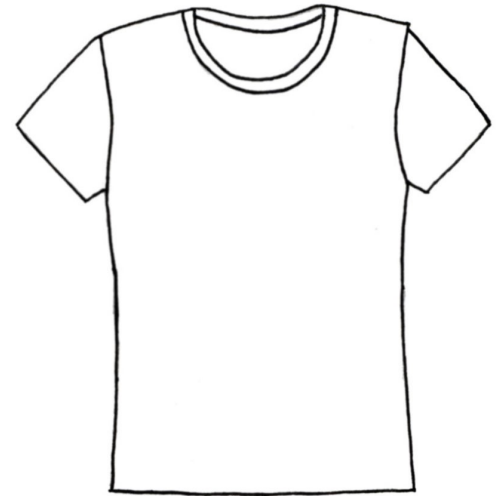
**Bullseye :** Label center of bullseye, color placement and number of circles.

**Stripes:** Label stripe direction, color placement and number of stripes.

If you have a graphic, label where you want it.

List any other instructions, as needed.

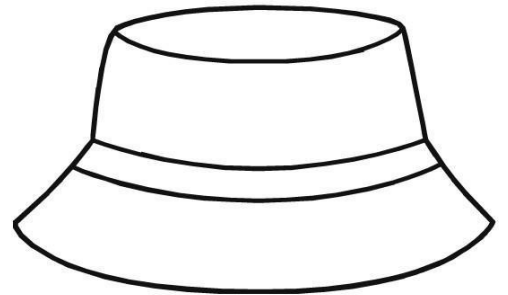
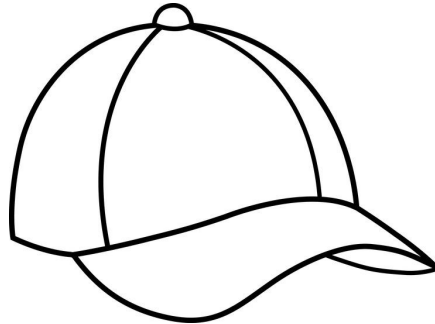
IF OTHER ITEM, USE MISCELLANEOUS DIAGRAMS BELOW.



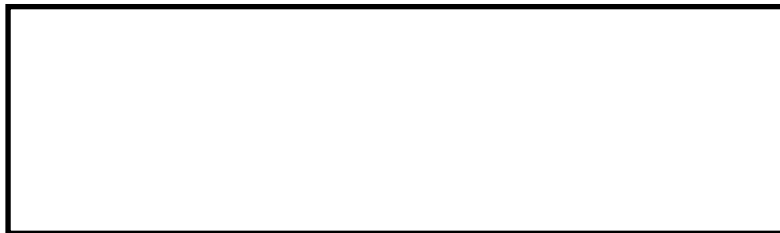
## ORDER TIME FRAME

Custom orders are created on the weekdays. There will be a minimum of at least 1 business day for the order to be completed. Orders placed on Fridays or weekends will be ready for pick up by 5pm the following Tuesday. Orders with multiple items or placed during peak times (school breaks and summers) may require longer completion time. **For orders placed online, please fill out form and email back to us at [carver@thetiedyelab.com](mailto:carver@thetiedyelab.com). We will contact you to discuss and send you an invoice for payment before proceeding.**

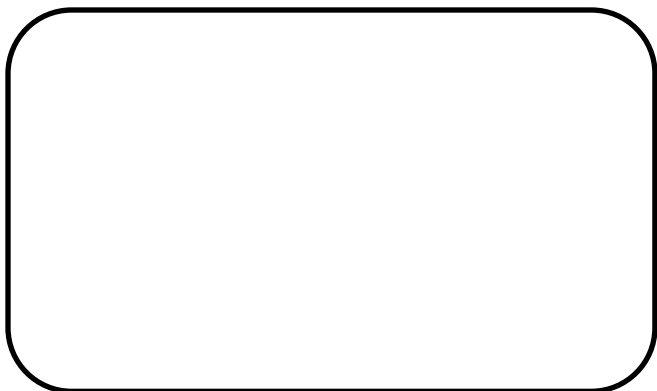
**FOR STAFF USE: PAID: YES NO \*Payments must be made in advance unless otherwise arranged.**



**INFINITI SCARF**



**BABY BLANKET/BEACH TOWEL**



**BANDANA/TAPESTRY**

